

DEMAND PERFORMANCE

Bradley's Enclosed Safety Showers deliver superior protection and safe refuge from the harshest environments on earth



CUSTOM ENGINEERED TO YOUR SPECIFICATIONS

The safety of your employees is paramount. Bradley's Enclosed Safety Showers provide superior design, innovative drenching technology, and premium features that come standard.



BRADLEYCORP.COM

EMPLOYEE SAFETY. DEMAND PREMIUM PERFORMANCE.

SAFETY. FIRST AND LAST.

Provide employees with a safe work experience – no matter where the job site takes them and no matter what environmental or industrial conditions they encounter. Capable of withstanding seismic activity, hurricane-force winds, and highly-corrosive environments, Bradley Enclosed Safety Showers deliver the ultimate in protection.

EASY TO CONFIGURE. CUSTOM ENGINEERED TO YOUR SPECIFICATIONS.

Innovative drenching technology with SpinTec™ showerhead and Halo™ eye- and eye/face washes. Exclusive fire-rated, 100% vacuum-formed fiberglass surrounds' construction meets NEMA 4X enclosure rating and provide protection from UV, salt-laden air and chemicals. Tempered water solutions, including Keltech tankless water heaters and Navigator® emergency thermostatic mixing valves. No matter what unique environmental conditions exist, Bradley will configure an indoor or outdoor model to suit your application.

Outdoor Enclosed Safety Showers



Indoor Enclosed Safety Showers



Exclusive !

100% vacuum-formed fiberglass surround construction meets the NEMA 4X enclosure rating and provides protection from UV-rays, exposure to chemicals and salt-laden air.



Certified to ANSI Z358.1 UL, CEC and NEC Codes.

Protect employees from extreme environments with a customized safety solution – turnkey shower, eyewash and drench hose systems. Bradley's Enclosed Safety Showers address the physical and psychological needs of the injured party by providing privacy, delivering warm water, warm ambient temperature and a shelter from the elements. Tempered water inlet, hot water tank, self-contained or tankless hot water heater options.

OUTDOOR MODEL S19388



ANSI Z358.1 requires that safety systems with multiple drenching platforms be capable of simultaneous activation while delivering tepid water for a duration of 15 minutes.

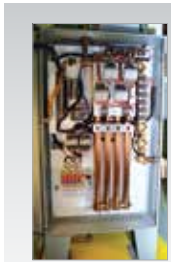
- | | | |
|---|---|---|
| <ul style="list-style-type: none"> 1 Red Strobe Visible 360° 2 Top lift capability 3 Interior fluorescent light 4 Patented Keltech® electric tankless water heater saves energy and provides unlimited hot water with industry's lowest pressure drop, disconnect and ground fault included, and single electrical connection 5 Convection heater warms enclosure | <ul style="list-style-type: none"> 6 Stainless steel reinforced bumper plates 7 Base lift capability 8 100% Fiberglass floor grate 9 Temperature Control/Insulation: R-12 Insulation factor 10 Designed to withstand 150 mph, 3 second gust hurricane force winds 11 Constructed to the highest building seismic requirements | <ul style="list-style-type: none"> 12 100% Vacuum-formed fiberglass enclosure (commercial airline grade) 13 Scald & freeze protection valves 14 Fire retardant, UL 94 V-0 Self extinguishing fire rating and Class 1 ASTM E84 15 Spintec Drench showerhead: 22 GPM flow control, most effective removal of contaminants 16 Drench Shower, eyewash and drench hose complies to ANSI Z358.1 |
|---|---|---|

Halo EYE/FACE WASHES AND SPINTEC™ SHOWERHEADS

In an emergency, you want an eye/face wash unit that provides the most coverage. With Halo, you get the best on the market – covering 85% of the average user's face. That's more than 20% better than any other unit on the market. SpinTec showerheads incorporate the latest technology in fluid dynamics and provide the most consistent distribution of water from a drench shower. That means the fastest, most effective removal of contaminants in the industry.



UL Classified to
meet ANSI-Z358.1



Meets ANSI-Z358.1 standards. Third-party verified by ETL/CETL. Only tankless units in the world that can be ASME and NB certified.



KELTECH® TANKLESS TEMPERING SYSTEMS

Efficient, precise and fast, Keltech tankless tempering systems provide ANSI-required tepid water within seconds. Quality is unmatched with premium features that exceed the specifications of any application.

NAVIGATOR THERMOSTATIC MIXING VALVES

Navigator® emergency thermostatic mixing valves not only accurately maintain temperature, they also have an added safety feature. If the cold water stops, Navigator valves prevent scalding by shutting down the hot water. If the hot water stops or the thermostat loses its charge, the valves' fixed cold-water ports keep the cold water flowing.



Meets
ANSI-Z358.1
standards

**For technical information about Bradley's Enclosed Safety Showers
and all other Bradley Emergency Fixtures, see bradleycorp.com.**

262 251 6000
800 BRADLEY bradleycorp.com
W142 N9101 Fountain Boulevard
Menomonee Falls, WI 53051 USA
3982-2-0914

